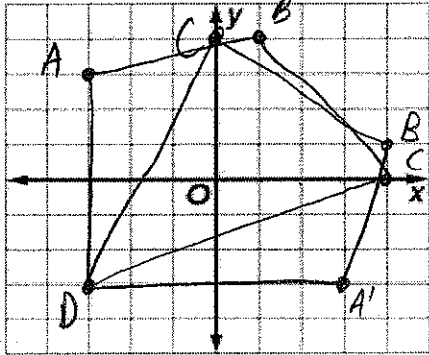


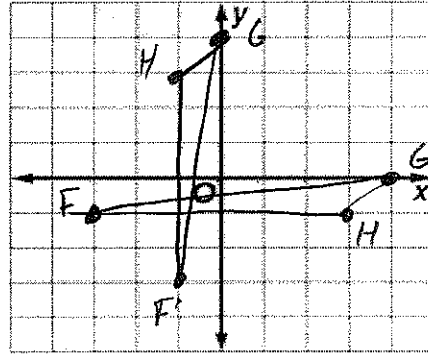
9.2 Warm-Up

COORDINATE GEOMETRY Graph each figure and its image under the given reflection.

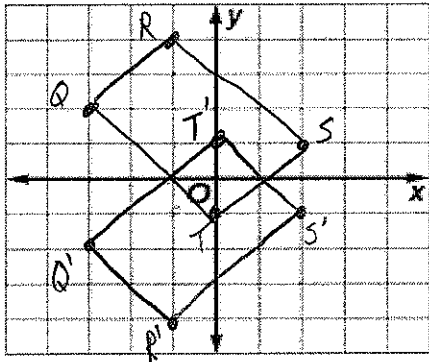
1. Quadrilateral $ABCD$ with vertices $A(-3, 3)$, $B(1, 4)$, $C(4, 0)$, and $D(-3, -3)$ in the line $y = x$



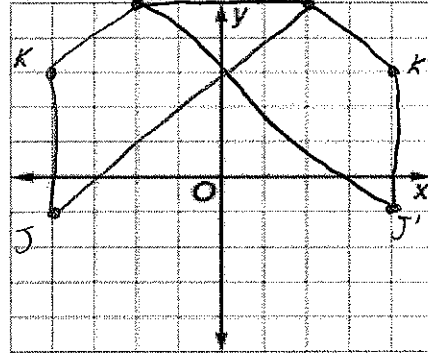
2. $\triangle FGH$ with vertices $F(-3, -1)$, $G(0, 4)$ and $H(3, -1)$ in the line $y = x$



3. Rectangle $QRST$ with vertices $Q(-3, 2)$, $R(-1, 4)$, $S(2, 1)$, and $T(0, -1)$ in the x -axis



4. Trapezoid HJK with vertices $H(-2, 5)$, $I(2, 5)$, $J(-4, -1)$, and $K(-1, 3)$ in the y -axis



9.2 Translations

Target: Use properties of translations in the coordinate plane.

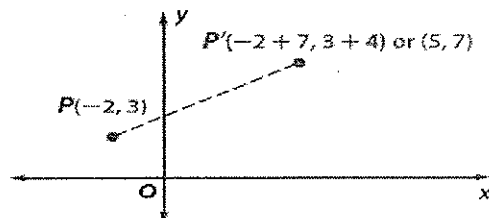
Vector- a way to move along the coordinate plane.

KeyConcept Translation in the Coordinate Plane

Words To translate a point along vector $\langle a, b \rangle$, add a to the x -coordinate and b to the y -coordinate.

Symbols $(x, y) \rightarrow (x + a, y + b)$

Example The image of $P(-2, 3)$ translated along vector $\langle 7, 4 \rangle$ is $P'(5, 7)$.



Example 2 Translations in the Coordinate Plane

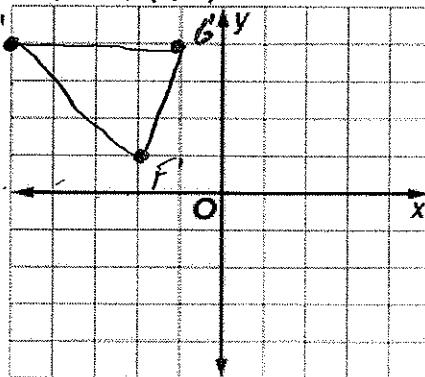
Graph each figure and its image along the given vector.

- a. $\triangle EFG$ with vertices $E(-7, -1)$, $F(-4, -4)$, and $G(-3, -1)$; $\langle 2, 5 \rangle$

$$E(-7, -1) \quad E'(-7+2, -1+5) \quad E'(-5, 4)$$

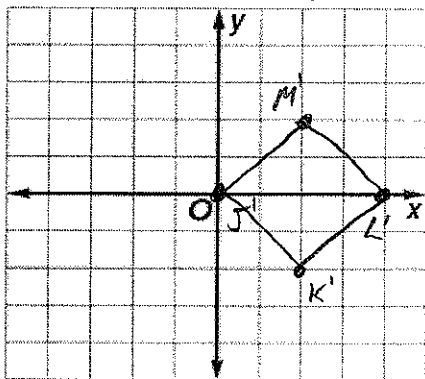
$$F(-4, -4) \quad F'(-4+2, -4+5) \quad F'(-2, 1)$$

$$G(-3, -1) \quad G'(-3+2, -1+5) \quad G'(-1, 4)$$



- b. square JKLM with vertices $J(3, 4)$, $K(5, 2)$, $L(7, 4)$, and $M(5, 6)$; $\langle -3, -4 \rangle$

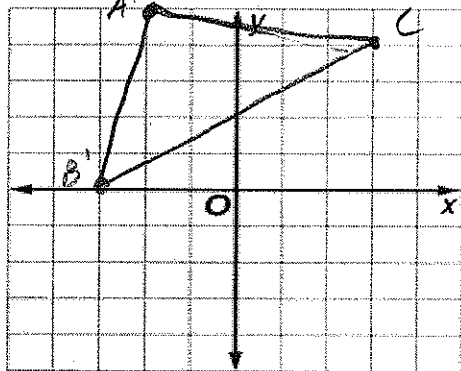
$$J'(0, 0) \quad K'(2, -2) \quad L'(4, 0) \quad M'(2, 2)$$



Guided Practice

- 2A. $\triangle ABC$ with vertices $A(2, 6)$, $B(1, 1)$, and $C(7, 5)$; $\langle -4, -1 \rangle$

$$A'(-2, 5) \quad B'(-3, 0) \quad C'(3, 4)$$



- 2B. quadrilateral QRST with vertices $Q(-8, -2)$, $R(-9, -5)$, $S(-4, -7)$, and $T(-4, -2)$; $\langle 7, 1 \rangle$

$$Q'(-1, -1) \quad R'(-2, -4) \quad S'(3, -6)$$

$$T'(3, -1)$$

